



Primate Movement

Lesson Four

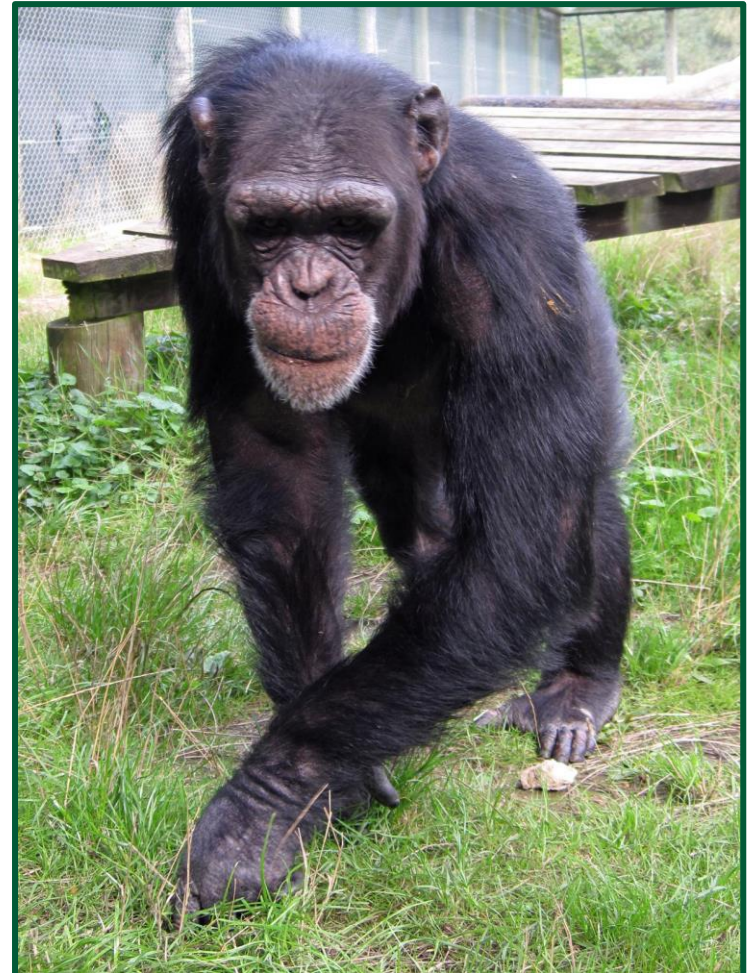
Movement Patterns

Clinging and Leaping

Quadrupedalism

Brachiation

Bipedalism



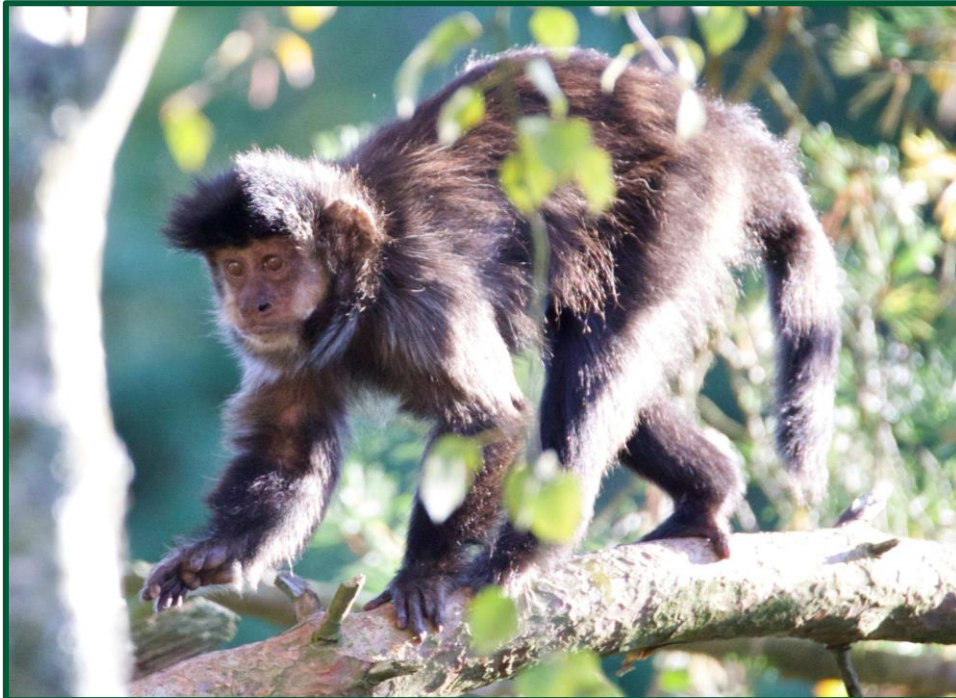
Clinging and Leaping



Clinging and Leaping



Quadrupedalism



Capuchin monkeys are arboreal quadrupeds.



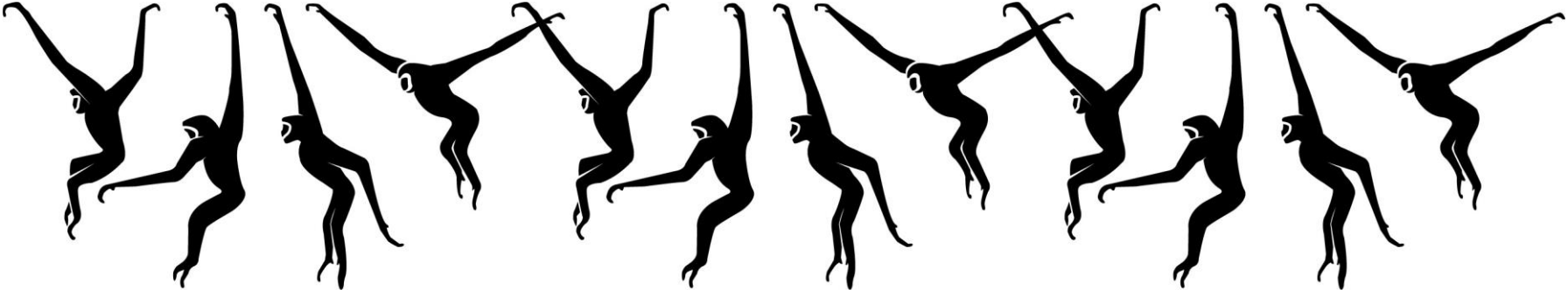
Stump-tailed macaques are terrestrial quadrupeds.



Brachiation



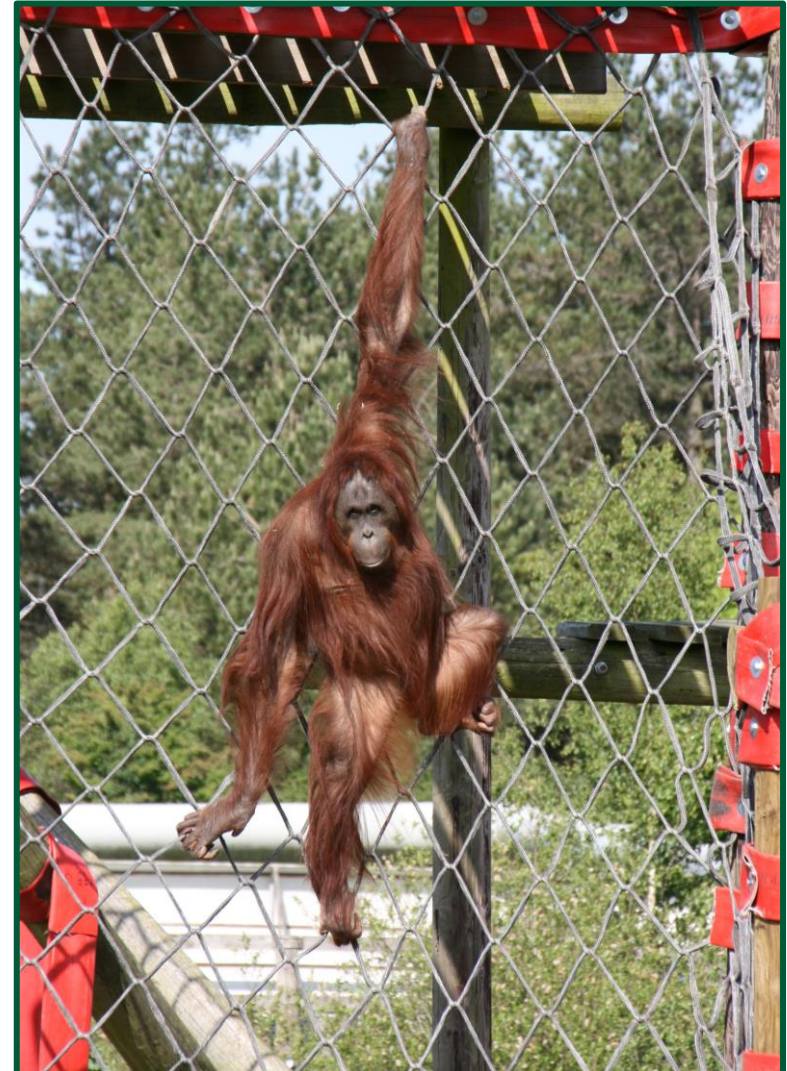
Brachiation



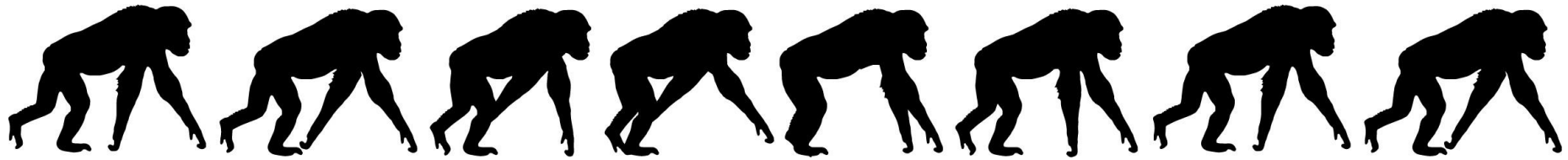
Brachiation



Modified Brachiators



Modified Brachiators



Bipedalism



Bipedalism



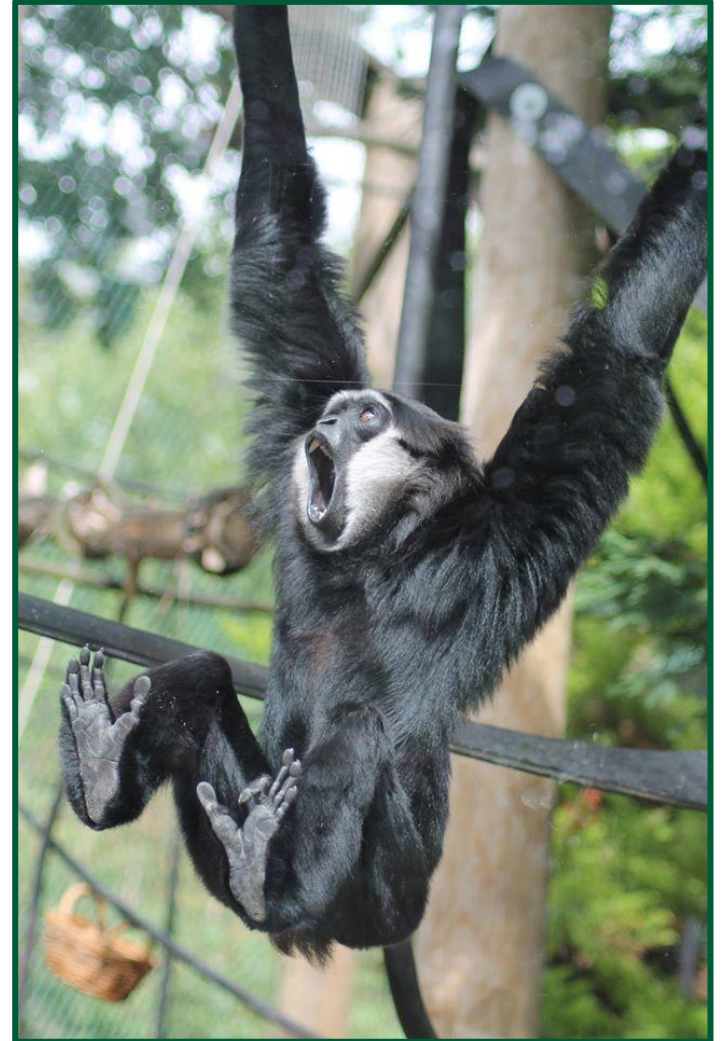
Recap!

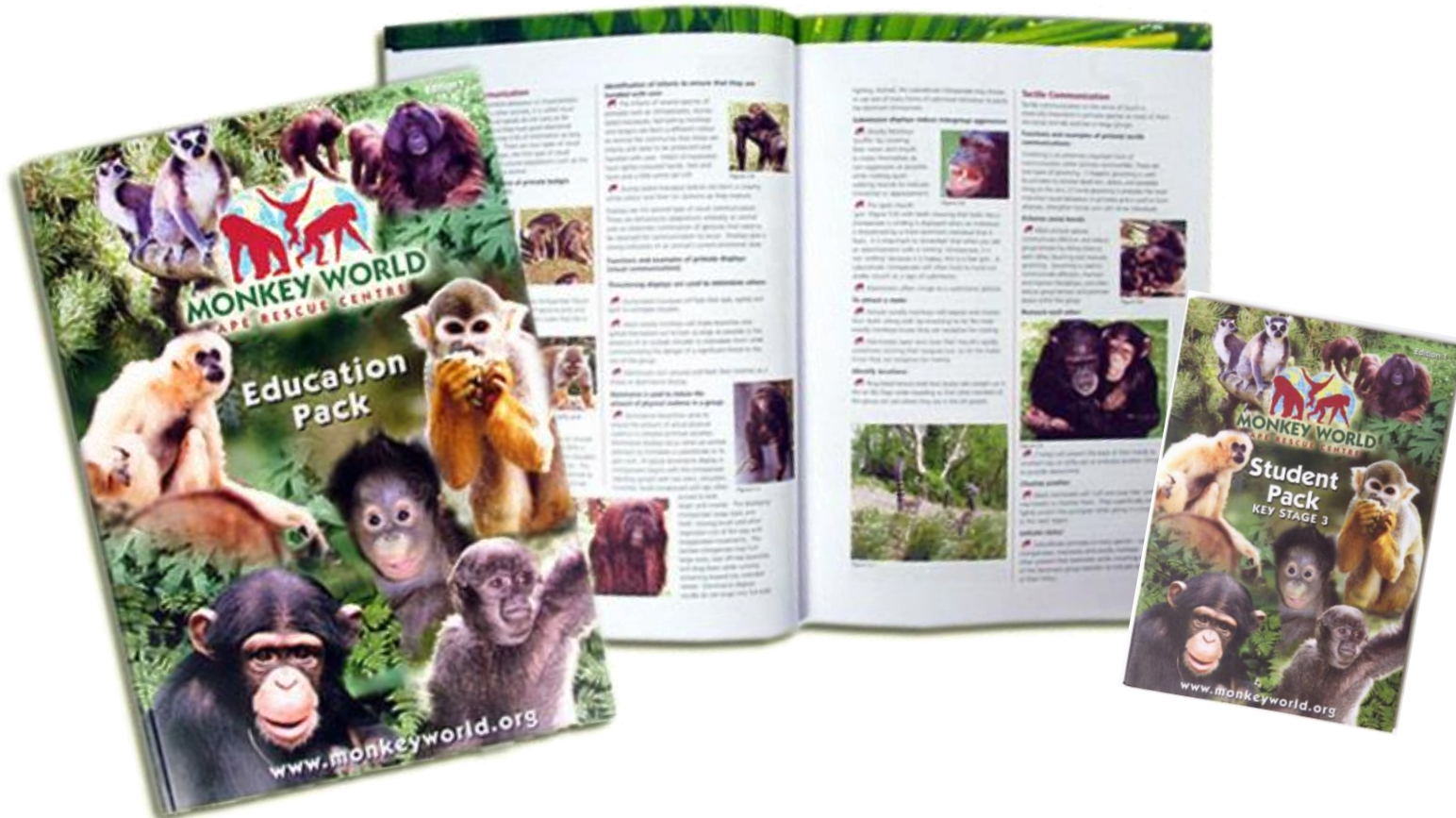
Four main movement patterns:

- Clinging and Leaping
- Quadrupedalism
- Brachiation
- Bipedalism

The great apes are **modified brachiators**.

Primates' bodies are adapted so they can move easily through their specific habitat.





This course has been designed alongside our fantastic Education Pack and accompanying workbooks (KS1-3), which are available from [our online Gift Shop!](#)

