

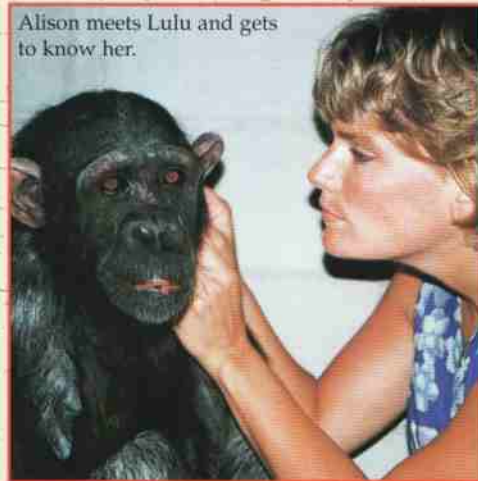
LULU, OUR ONE-ARMED CYPRIOT

On October 12th Jim and Alison Cronin, along with their veterinarian, John Lewis, went to Cyprus to meet and assess the condition of an adult female chimpanzee named Lulu. Lulu's story is a very interesting one. She began her life in a Russian circus that was travelling through Cyprus. After her birth, Lulu's mother bit her very badly and she was removed from her mother's care. At the circus the baby chimp was left in a small cage with her wounds untreated. Soon her arm became terribly infected.

Luckily for Lulu, a concerned man visited the circus with his children and saw the sorry baby chimpanzee. He asked the staff what they were doing about the chimp's arm and they said "Nothing, but if you want her, you can take her to your own doctor". So he did! Once at the doctors, they confirmed that Lulu's condition was very serious and that the arm would have to be amputated below her shoulder. The kind family spared no expense and found a surgeon and an anaesthetist to perform the operation in their sitting room. Once the poisonous limb was removed, Lulu's spirits picked up and the baby chimp quickly adapted to life with only one arm.

Lulu lived with two children and their parents for 4 years before she started becoming dangerous and unpredictable. Sadly this is the same story that we have encountered so many times in the past. As cute as they may be as youngsters, as chimpanzees grow up they become unpredictable

Alison meets Lulu and gets to know her.



and volatile. Chimps make terrible pets and by four years old Lulu smashed the television and started tearing the house apart. The family moved Lulu to a cage at a horse stable where she lived for another four years. Over the summer Lulu's family began to realise that she needed more in her life - like companionship of her own kind. In August the family contacted Monkey World to see if we could give Lulu all the things she needed for a secure and happy future. We agreed that we would try and rehabilitate Lulu into a group of chimpanzees.

On October 13th we prepared Lulu for her long journey to Dorset. At the horse stables she knew that something was happening as there was a lot of activity, there was a large box outside, and there were many strange faces. For the first few hours Jim and Alison spent time with Lulu just getting to know her. This quality time was important in order to find out what Lulu's personality was like and it also gave Lulu a chance to get to know the people that she would have to rely upon in the coming days. Growing up on her own, Lulu became very spoiled and always wanted her own way. This attitude would have to change if she was going to be accepted into a group of chimpanzees. In the afternoon the travelling box was secured up against the side of Lulu's house. The Monkey World team hoped that Lulu would be happy to walk into the box without having to be sedated. The plan worked and within seconds Lulu was secured in a box complete with a drinker, food, and bedding for the long journey.



Lulu lost her arm at a very young age

Continued on page 5.



LETTER FROM THE EDITOR

The past summer has been very busy with hundreds of thousands of visitors to the park, travelling for rescue operations, building for future rescues, and of course making the lives of the primates here at the park as good as possible.

Over the past few months we have received a great deal of support from many people. Many tourists have sent us reports of abused primates that they have seen on holiday, and we follow up on as many of these reports as possible. Adoptive parents have sent in birthday presents, vitamin supplements, food items and toys to keep their monkeys and apes happy and healthy. Mrs Judith Jones and Mrs Jeanne Gyles knitted many beautiful jumpers for us to sell in our gift shop while others have had table sales, car boot sales, snack shops, football matches, and sponsored swims. C&H Travel kindly donated a television and a microwave to the park while the Red Setters Volleyball Team have adopted Charlie and wear Monkey World badges on their uniforms. We have also received some generous donations and many businesses have collected change in donation boxes for the monkeys and apes. Cyprus Airlines was a great help by flying Lulu for free. Their crew went out of their way to make Lulu's journey as comfortable and stress free as possible.

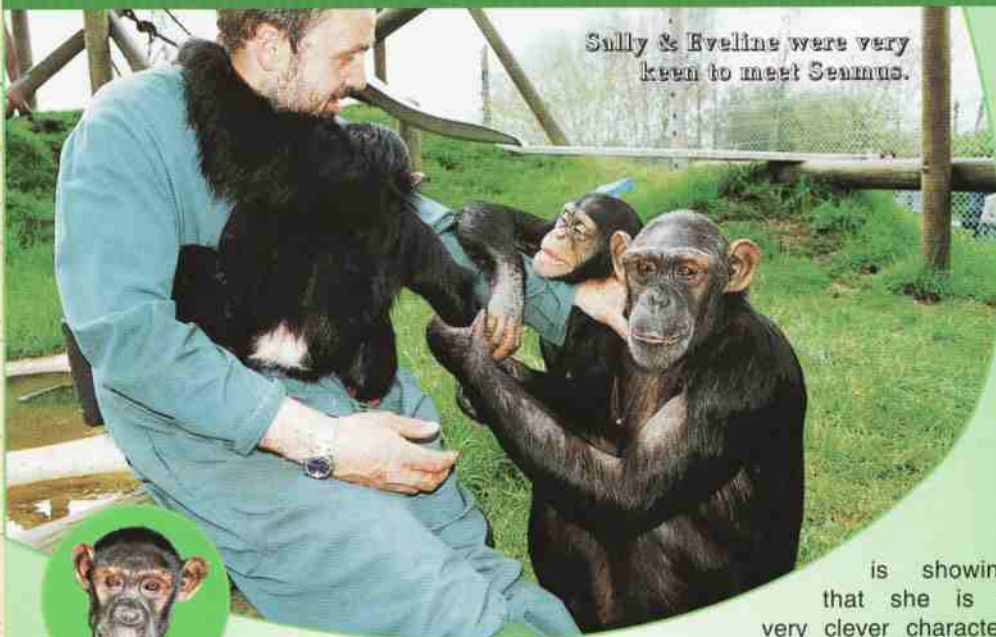
Our joint project with the Pingtung Rescue Centre in Taiwan continues and at the time of writing this our Lead Keeper, Lee Butler, and veterinarian, Dr John Lewis, are currently working at the centre in Taiwan. We have many more exciting projects underway and are currently building a new monkey house in the first 25 acres of our expansion. The new house should be occupied by the spring and the guys that are coming are UGLY and PROUD!

Merry Christmas and Happy New Year

Olson Cronin

UPDATE ON

By Lee Butler, Jeremy Keeling, Marina Kenyon, & Dave Simmonds



Sally & Eveline were very keen to meet Seamus.



is showing that she is a very clever character.

Lulu observes everything and

makes decisions carefully.

Eveline – She is beginning to grow up into an independent chimp. If ever there is any trouble however, she is straight back onto Sally's back.

Honey – Honey is just great. Everything is fun and she always encouraging the others to play.

Seamus – He is totally adapted to living with other chimps and it appears that Seamus enjoys being the only boy in the group. Everyone dotes on him.

NURSERY GROUP – The recent addition of a new individual to the group has caused a bit of a stir but everyone is getting a long well together.

Sally – Is still in charge of the Nursery group and enjoys looking after Seamus. Even though they have only been together for a short time, Sally has already let Lulu know who is dominant.

Lulu – Is settling in slowly with the group and

RODNEY'S GROUP -



This group has become a very stable community of 15. They all get along very well together even though there are many individuals making the difficult transition from childhood to adulthood.

Rodney – Copes well with having to look after the group, even though they are mostly juveniles.



Rodney watches Trudy while Momi & Valerie play in the background



EVERYONE AT A



PADDY'S GROUP –

This group is very stable now and looks upon the two babies kept in a nursery along side of them, as part of their group.

Paddy – He is a very kind leader and has full support of the group. As alpha male his appearance suits his role. Paddy is a dramatically handsome chimp.

Jimmy – He is Paddy's No. 2 and is becoming more relaxed within the group.

Micky – One of the first chimps in this group to participate with training for vet checks. Micky is quiet but a very solid member of the group.

Busta – As playful as ever and enjoyed playing in water spray during the summer.

Paco – He is becoming more confident in the group as he matures into a large adult male.

Gamba – Playful and mischievous and always testing Paddy's patients by hitting him and running away.

Beth – The dominant female of the group and enjoys participating in the training programme.

Zoe – Gives Gamba a ride from time to time and enjoys the training programme.

Cindy – Has middle to high status within the

group and spends a lot of time by Paddy.

Susie – A quiet, dominant female that is never far away from Paddy.

Chatta – A low ranking female that is always first in the queue for having her hands and feet oiled.

Clin – Enjoys making a strange singing noise to herself. Clin is very greedy at feeding time.

Cathy – Enjoys playing up when its time to go out in the morning and often decides to stay inside.

Grisby – Is fairly quiet but will stand her ground in the group if there is an argument.

Evie – Is still very close to Bixa but has drifted away from Paddy a bit.

Bixa – She does not spend as much time with Paddy any more but is never far from Evie.

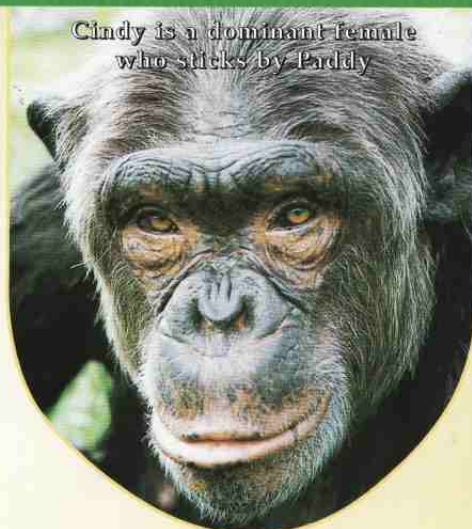
Peppa – Is still a low ranking female within the group and is brilliant at her training.

Lola – She is a low ranking female and keeps to herself.

Olympia – Is doing well in the group and likes hanging around with Hebe and Johni at (and in) the Pavilion's Nursery.

Athena – Gamba also enjoys teasing Athena and she usually falls for it much to Gamba's amusement.

Key – Is doing well in the group and is no easy



Cindy is a dominant female who sticks by Paddy

pushover as she is maturing into a large female. Still her rank is quite low in the group.

Hebe – As a result of her mother's milk running out, Hebe is a bit small for her age but she is full of energy and spends her time playing and climbing.

Johni – As a bottle fed baby, Johni is quite big but is not as coordinated as Hebe. Johni loves playing with Hebe and is dependent upon her for comfort and support.

Peggy – She is not so shy any more and has a very close bond with Trudy.

Cherri – Is the most dominant female and uses her status to curry favour with Rodney.

Mona – She has become more active and youthful since the introduction of Valerie. They are very close and depend upon each other for security.

Hananya – He is intelligent and helpful with a strong character. Hananya gets on well with everyone and we are hopeful that he will develop into a great leader some day.

Tikko – Whenever there is trouble, Tikko stays well out of the way. He has a quite serious character but enjoys playing as well.

Semach – Is a friendly chap and enjoys looking after anyone who is smaller than himself.

Gypsy – Does not have a high position in the group but is great friends with Tikko.

Simon – Still plays the clown even though he is growing up. Simon is happy to spend time on his own practising his acrobatics.

Arfur – Is a friendly thug who plays rough with young and old alike. He and Jess still have a close relationship.

Jess – Now becoming a young adult, her position in the hierarchy has risen substantially and she is not so dependent upon Arfur for comfort any more. Jess is developing into quite a flirt.

Trudy – At 4½ years now she has started to loose her milk teeth but she still plays the baby to anyone who will give her attention.

Valerie – Has made great friends with Mona and can often be found with her arm around Mona's shoulder.

Marjoline – Still has a very rough and tough character and has become very close to Cherri.

Joline – Is still very shy but is slowly starting to come out of her shell. Since moving into this group, Joline has slimmed down.



Trudy loves to play silly games



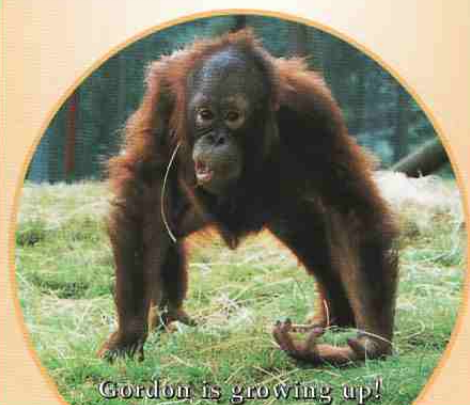
ORANGUTANS –

It took a while for the orangutans to accept a new individual in the house but they have now settled in well and everyone is getting along well together.

Amy – Is still in charge of the orang house but has decided that RoRo is OK. Amy's relationship with Gordon has come on leaps and bounds and they now spend a lot of time together.

RoRo – Still enjoys playing with Gordon and generally has a very happy outlook on life. RoRo is very active and inquisitive.

Gordon – Is starting to grow into a young man. Gordon alternates between wanting to be mothered by Amy or play rough and tumble with RoRo.



Gordon is growing up!



MONKEY WORLD



BUTCH'S GROUP

The Bachelors have finally settled down and are all getting along very well together.

Butch – Is still the alpha male of the Bachelor group even though he is prone to temper tantrums.

Jestah – Is very close to Buxom and Butch and these 3 form the dominant core of the Bachelor group.

Buxom – Is Butch's No 2 with a strong personality.

Sammy – With his droopy ears and bottom lip he is the most entertaining individual in the Bachelor group.

Kyko – He is always looking for something or someone to groom.

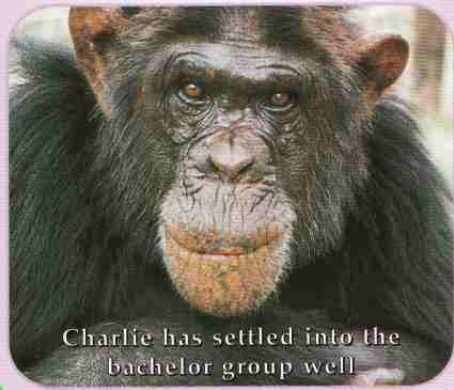
Rocky – Enjoys playing and chasing around with Mojo.

Freddy – Is always up to mischief and enjoys playing with Pacito.

Pacito – Is doing well since his introduction the Bachelors and has found a new friend in Freddy.

Charlie – He is settling down well and has enjoyed sunbathing over the summer months. Charlie seems happy being back with his old friend Butch.

Mojo – He loves playing with Rocky and generally gets on well with everyone in the group.



Charlie has settled into the bachelor group well



MONKEYS AND LEMURS –

This past season we have had many new arrivals and a few old friends that have passed on.

Woolly Monkeys – At 21 months, Rosa, has learned to snuffle "hello" with her fingers stretch over her face. The six others adore Rosa and hopefully she will have a little brother or sister soon when Milagra gives birth.

Squirrel Monkeys – A baby was born at the end of October bringing the group to 10. Within hours of being born "Rio" was on mum's back with the other youngsters looking on, fascinated.

Capuchins – Arthur and Sinbad are developing teamwork as they launch their attack, be it at birds or green wellingtons. Arthur is more and more looking to Sinbad for reassurance.

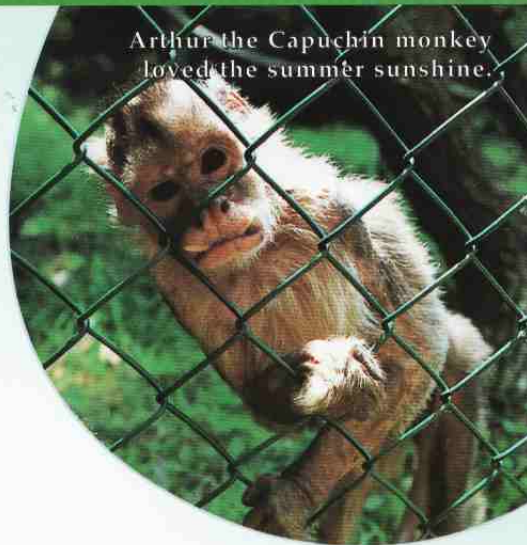
Marmosets – It has been a summer of sunbathing and chasing butterflies for our 4 Marmosets who have gained confidence and settled well into their new home. Sadly we lost Jack who was very old.

Barbary Macaques – Led by Clavity, the darker male, they have just gone through a moult preparing their thick coats for wind and rain. The Barbarys always choose to brace the elements, resisting the comfort of their heated house.



GIBBONS – Everyone at the park is very pleased at all our new arrivals. The gibbons from Taiwan have settled in to their new home and we are overjoyed with our new baby siamang.

Siamangs – After months of watching Sage get bigger and bigger she had a beautiful baby boy, Onion, on October 19th by caesarean section. Although the birth was difficult, Sage is



Arthur the Capuchin monkey loved the summer sunshine.

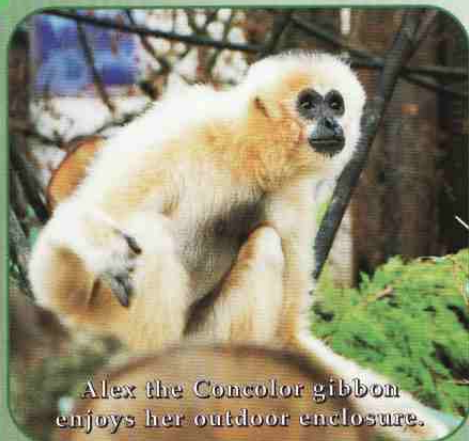
Pigtail Macaques – The Pigtails spend lots of time grooming and chasing, trying to maintain a changing social ladder. Their hierarchy was recently upset by the loss of Shakey, a young female who had health problems from birth.

Ringtail Lemurs – Four youngsters were born during the summer taking the group up to 18. Rosie had twin boys while Poppy and Tibet had a boy and a girl respectively.

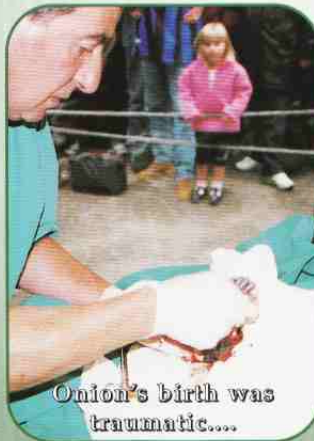
Ruffed Lemurs – Over the summer we lost Norma, a black and white coloured lemur, who passed away at a very old age. There are now 3 elderly females left in the group: Inky, Blue and Perky.

proving to be a good first time mother. Sam is already trying to get involved in parental duties by grooming little Onion.

Concolor, Muellers, Agile, and Lar Gibbons – All of the gibbons have settled into their new homes and we are beginning to introduce some of them together. They love their outside enclosures and spend a great deal of time swinging arm to arm and singing. From the calls you can distinguish between the 4 different species.



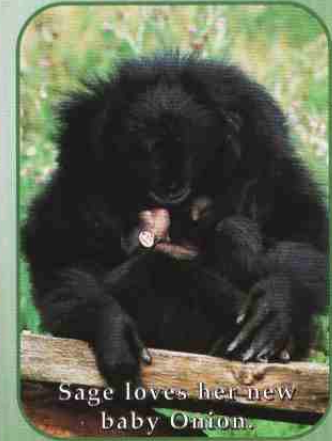
Alex the Concolor gibbon enjoys her outdoor enclosure.



Onion's birth was traumatic....



...but everyone is doing well now.



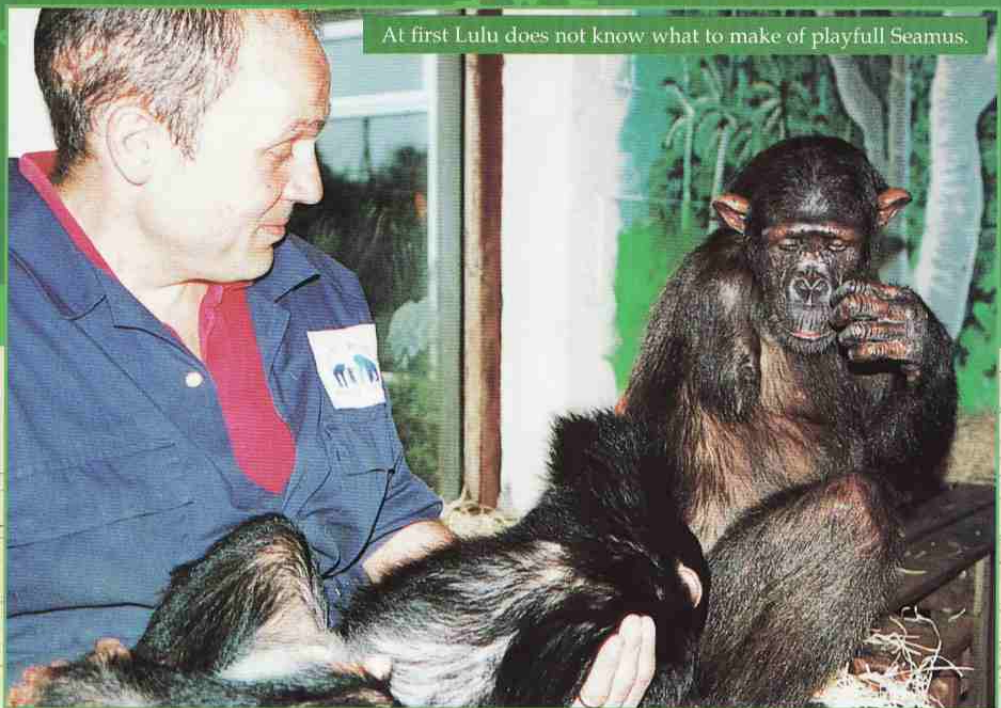
Sage loves her new baby Onion.



Lulu is ready to travel in her box.



At first Lulu does not know what to make of playful Seamus.

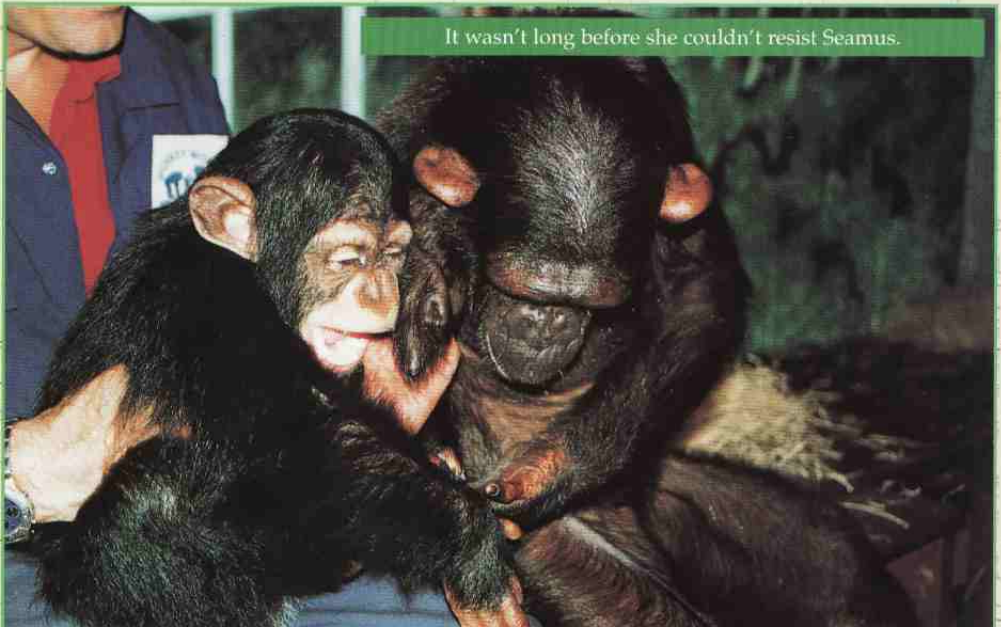


Continued from front page.

The flight to London left Larnica airport early in the morning on the 14th. Lulu was flown courtesy of Cypriot Airlines and their staff ensured that everything went smoothly for their VIP passenger. Lulu's box was secured in the heated and pressurised cargo hold of the plane and by 3.00 a.m. all Lulu wanted to do is sleep. Her journey was event free and once at the park we settled Lulu into a bedroom along side of the Nursery group. Sally, Eveline, Honey, and Seamus were all curious about the new chimp in their house. After a couple of hours we brought Seamus into meet Lulu and she was scared to death of the little hairy person. Since the day she was born Lulu had never seen other chimpanzees so when confronted with a 1½ year-old chimp she was terrified and hid behind Alison. For the next week we continued the introductions to Seamus until we noticed that when Lulu was running away from Seamus she would stop and look over her shoulder to make sure he was following. It was Lulu's way of starting to play with Seamus. By October 24th we were able to leave Seamus and Lulu alone together and we started bringing Sally in to meet Lulu for short periods of time. While she was happy with the baby she was still frightened of Sally's size. Next was Honey. They got on quite well together even though Honey loved to sneak up on Lulu and pull her hair or give her a quick nip when she was not looking.

So far Lulu has surprised us all with how well she has adapted to her disability. She is very agile and quick and with the loss of one arm she has developed the use of her feet unlike any other chimpanzees we have seen. Lulu has learned to deliver a mean Karate kick that surprises any new chimps she meets. The introductions to Sally and Eveline are going slowly but all is progressing well for our one-armed lady from Cyprus.

It wasn't long before she couldn't resist Seamus.



Finally Lulu leans in to check Seamus out.



HOW YOU CAN HELP

There are many ways in which you can help Monkey World – Ape Rescue Centre to rescue and rehabilitate more primates. All donations go into a 100% fund.

NO ADMINISTRATIVE COSTS ARE REMOVED

Our negotiations are continuing in order to rescue chimpanzees that have been smuggled into Turkey and there will be more apes coming from Taiwan in the Spring.

You can help by adopting a monkey or ape and you will receive a year's pass to the park, a photo of your monkey or ape, a certificate, and the Ape Rescue Chronicle three times per year.

Help by donating goods such as fruit, vegetables, or bread. The primates also need vitamins and minerals such as Cod Liver Oil, Primrose Oil, Vitamin C, and Acidophilus. We can also use thick ropes and heavy duty dog toys.

Establish a legacy for the long-term welfare of the primates and be remembered in our memorial garden.

Monkey World – Ape Rescue Centre
Wareham, Dorset, BH20 6HH, England

Tel: (01929) 462 537 Fax: (01929) 405 414

Email: apes@aperescue.org

Website: www.monkeyworld.org

Director: Jim Cronin,

Scientific Director: Dr Alison Cronin,

Operations Manager: Jeremy Keeling.

Design:

David Dancëy Wood, Ben Mason.

